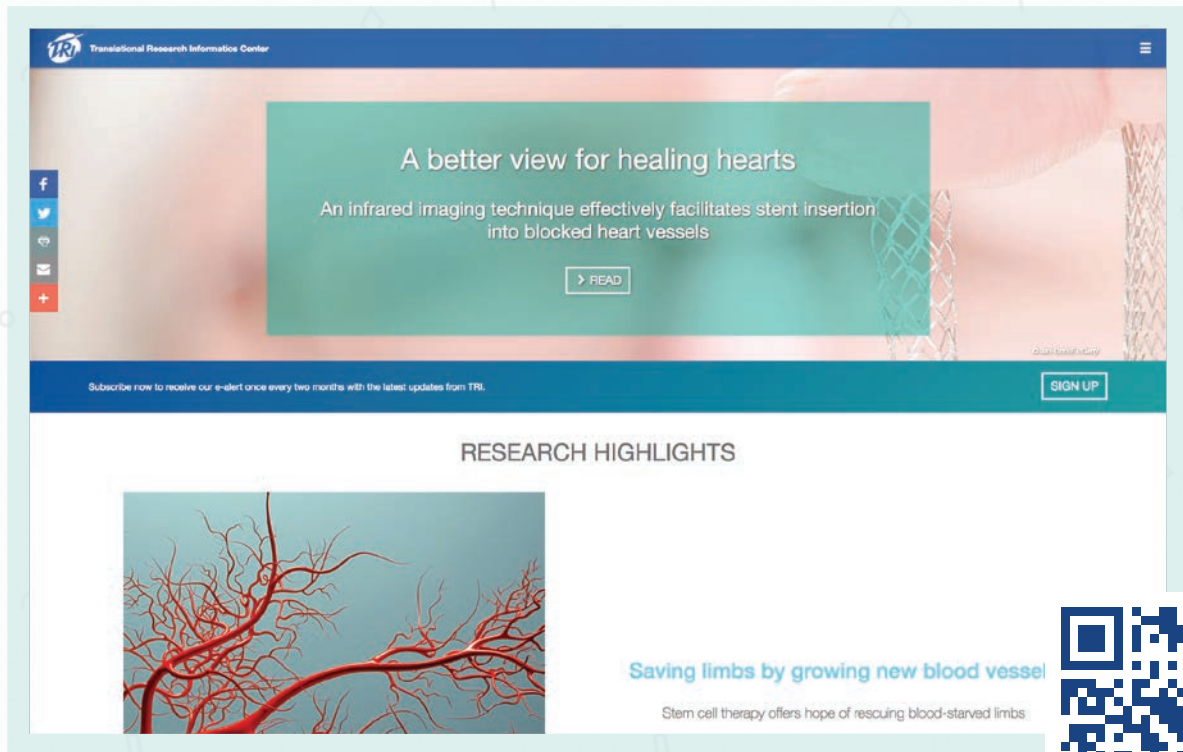


STAY INFORMED WITH TRI ADVANCES



TRI ADVANCES is a website dedicated to informing readers of the latest and greatest advances in translational medical research, updated monthly.

<https://advances.tri-kobe.org/>

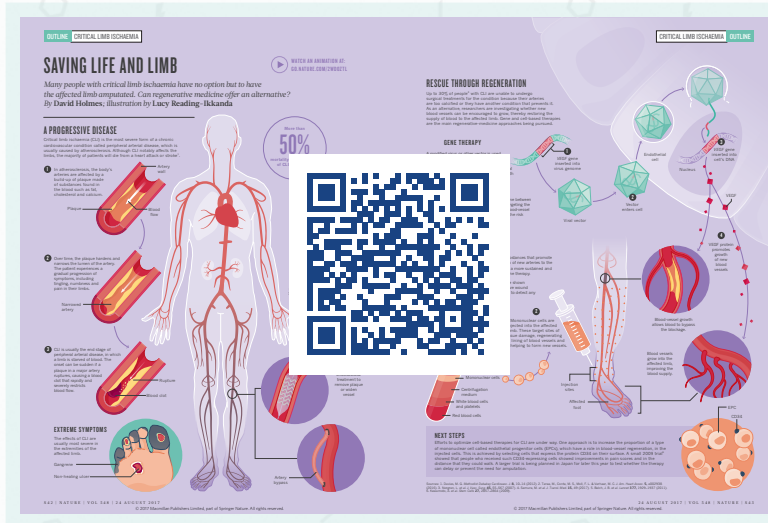


The **TRANSLATIONAL RESEARCH INFORMATICS CENTER**, or 'TRI', provides comprehensive support programmes for medical researchers for all phases of clinical study, from research planning to data analysis. By supporting Japan's best and brightest to create breakthrough innovations in technology and medical science, TRI is working towards tangibly improving the prognoses of intractable human diseases.

SUBTLE PATTERNS © TOPAL DESIGNERS

CHECK OUT THESE **NATURE OUTLINES**, **SUPPORTED BY TRI**

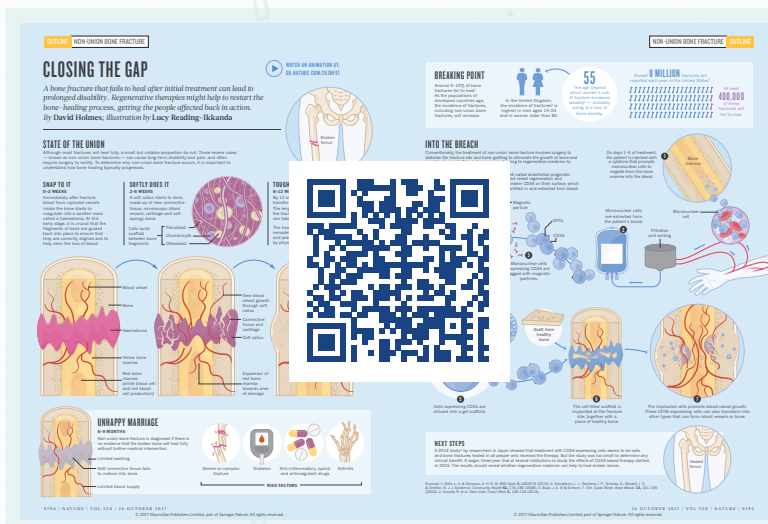
TRI has partnered with *Nature Outline* to bring you a series of informative collections covering the latest research in the medical sciences.



SAVING LIFE AND LIMB

Critical limb ischemia is a painful arterial disease that restricts blood flow and can result in the loss of a limb. To find out more read *Nature Outline: Critical limb ischemia*:

<http://www.nature.com/nature/outline/critical-limb-ischemia>



CLOSING THE GAP

Some fractures don't respond to standard treatments, leading to lasting pain and disability. To find out more read *Nature Outline: Non-union bone fracture*:

https://www.nature.com/nature/journal/v550/n7677_supp_out/full/550S194a.html



The **TRANSLATIONAL RESEARCH INFORMATICS CENTER**, or 'TRI', provides comprehensive support programmes for medical researchers for all phases of clinical study, from research planning to data analysis. By supporting Japan's best and brightest to create breakthrough innovations in technology and medical science, TRI is working towards tangibly improving the prognoses of intractable human diseases.